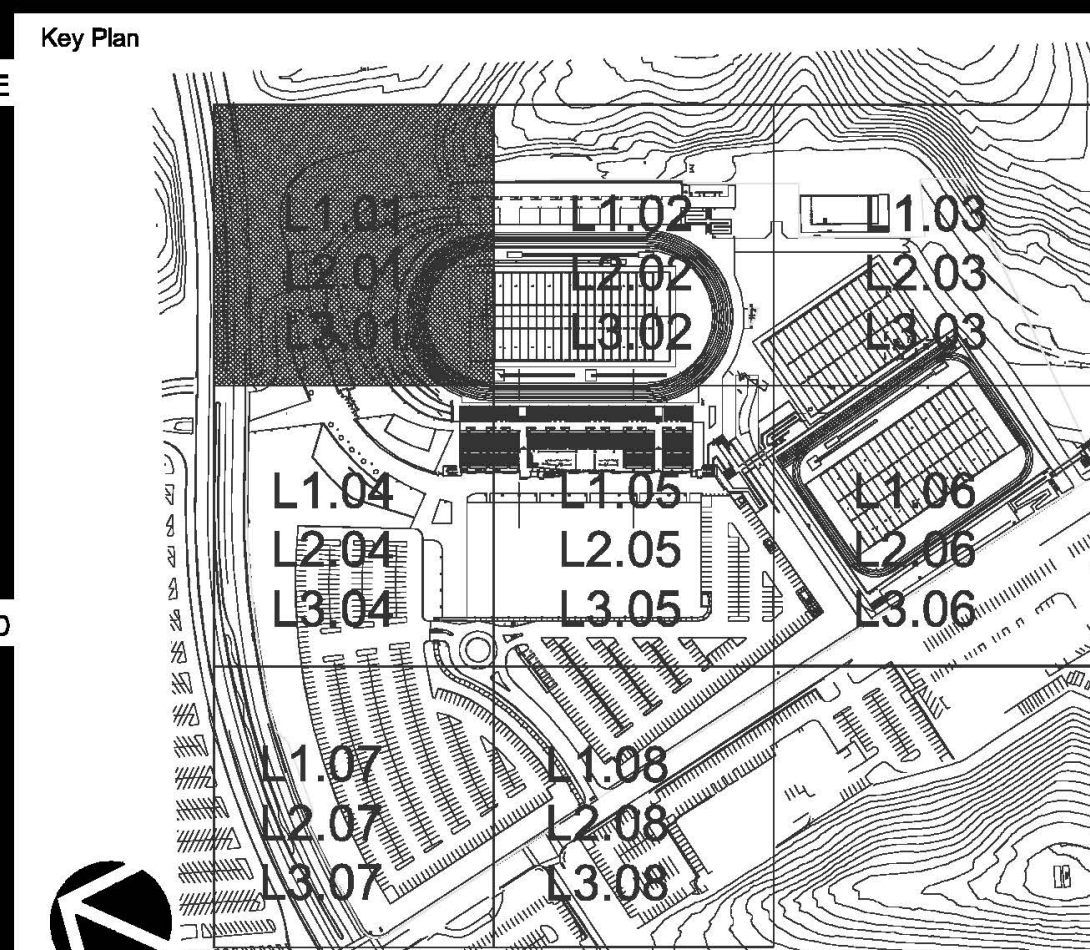


KEYNOTES

EPTDESIGN

landscape architecture | urban design | planning

844 East Green Street, Ste. 201
Pasadena, CA 91101
T | 626.795.2008 F | 626.795.2547
www.eptdesign.com



Consultant Seal: [Seal]

Agency Approval: [Seal]

FILE NO. _____

IDENTIFICATION STAMP
DIV. OF THE STATE ARCHITECT

APPL. _____

ACS: _____ FLS: _____ SSS: _____

DATE: _____

Project Title: **MT SAN ANTONIO COLLEGE**
Athletics Complex East

MT. SAC
Mt. San Antonio College

1100 North Grand Avenue
Walnut, CA 91789
(909) 274-7500
shothi@msac.edu

No.	Description	Date

Drawing Title: **PLANTING PLAN**

Architect's Seal: [Seal]

Designed: SC/BM Project No. 5018008

Drawn: JG/BO Scale: As indicated

QA/QC: BM Drawing No. **L3.01**

Date: 01/15/2015

PLANTING LEGEND: Trees, See Details E, F/L3.10

SYMBOL	NAME	WATER REQ.	SIZE	QTY	FORM
○	<i>Alnus rhombifolia</i> White Alder	High	48" Box	35	Standard
○	<i>Lyonothamnus flo. ssp. asplenifolius</i> Catalina Ironwood	Medium	24" Box	42	Standard
○	<i>Cercis occidentalis</i> Western Redbud	Medium	24" Box	167	Low Branching
○	<i>Platanus racemosa</i> California sycamore	Medium	36" Box	129	50% Std. 50% Multi
○	<i>Quercus agrifolia</i> Coast Live Oak	Low	24" Box 24" box unless otherwise noted	38 6	Standard
○	<i>Quercus douglasii</i> Blue Oak	Low	24" Box 24" box unless otherwise noted	7 4	Standard
○	Existing palm tree to remain. Protect in place per specifications	-	-	-	-
○	Existing tree to remain. Protect in place per specifications	-	-	-	-
-	Root Barrier	See Detail E/L3.10			

PLANTING LEGEND: Shrubs and Groundcover

SYMBOL	NAME	WATER REQ.	SIZE	QTY	DETAIL
⊗	<i>Acacia redolens</i> 'Low Boy' Prostrate Acacia	Low	5 gal @ 4' o.c.	8,035	C,D,G/L3.10
⊗	<i>Agave americana</i> American Century Plant	Low	5 gal	121	C,D,G/L3.10
⊗	<i>Agave attenuata</i> Fox Tail Agave	Low	5 gal	2686	C,D,G/L3.10
⊗	<i>Agave weberi</i> Weber's Agave	Low	15 gal	34	C,D,G/L3.10
⊗	<i>Arctostaphylos densiflora</i> 'Howard Morton' Manzanita	Medium	15 gal	243	C,D,G/L3.10
⊗	<i>Arctostaphylos 'Pacific Mist'</i> Manzanita	Low	1 gal	2836	C,D,G/L3.10
⊗	<i>Carex divulsa</i> Berkeley Sedge	Low	1 gal @ 18" o.c.	4,704	C,D,G/L3.10
⊗	<i>Conitrus coggygria</i> 'Royal Purple' Smoke Tree	Low	24" Box Low branching	30	C,D,G/L3.10
⊗	<i>Dodonaea viscosa</i> 'Purpurea' Purple-leaved Hop-bush	Low	15 gal	322	C,D,G/L3.10
⊗	<i>Eriogonum cinereum</i> Ashy-leaf Buckwheat	Medium	5 gal	454	C,D,G/L3.10
⊗	<i>Elaeagnus pungens</i> 'Fruitlandil' Fruitland Silverberry	Low	15 gal	497	C,D,G/L3.10
⊗	<i>Muhlenbergia capillaris</i> 'Lancel' Regal Mist Pink Muhly	Medium	1 gal @ 30" o.c.	5067	C,D,G/L3.10
⊗	<i>Muhlenbergia rigens</i> Deer Grass	Low	1 gal	2931	C,D,G/L3.10
⊗	<i>Prunus laetifolia</i> Holly-leaved Cherry	Low	15 gal	33	C,D,G/L3.10
⊗	1.5" Pewter Gray Crushed Aggregate Southwest Boulder and Stone	-	-	2897 SF	V/L3.10

PLANTING LEGEND: Coastal Sage Hydriseed Mixture

SYMBOL	NAME	WATER REQ.	SIZE	QTY	DETAIL
⊗	Hydriseed Mx	-	-	Per Planting Specifications	-

PLANTING LEGEND: Turf

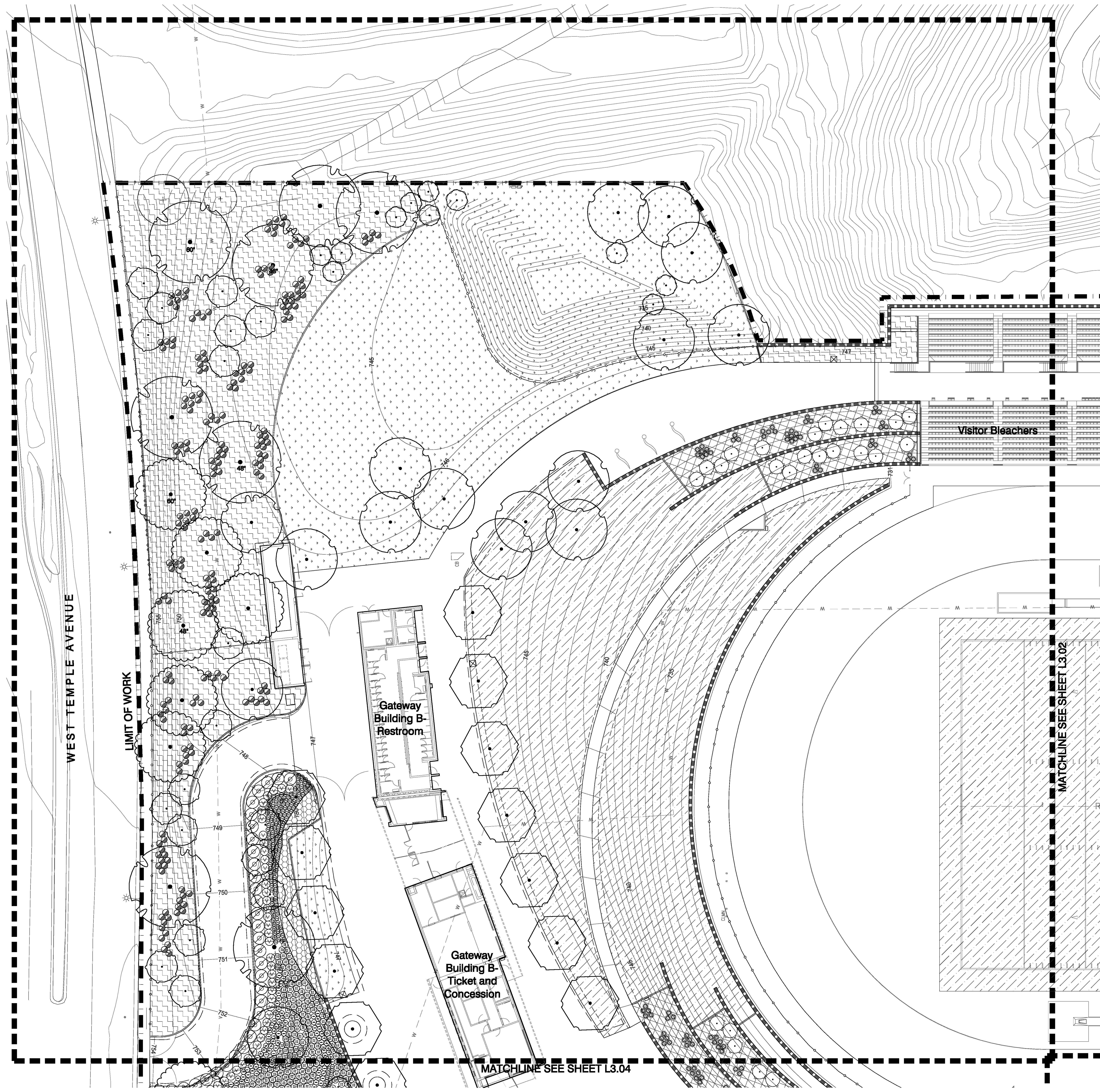
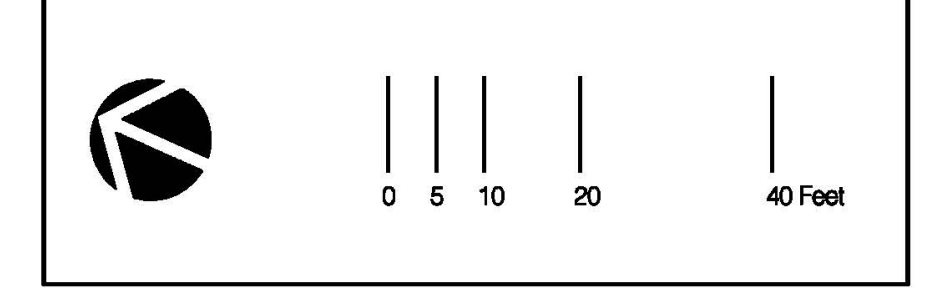
SYMBOL	NAME	WATER REQ.	SIZE/ QTY	DETAIL
⊗	Turf #1: Sod	High	254,390 SF	-
⊗	Turf #2: Hydriseed	High	117,281 SF	-

PLANTING LEGEND: Landscape Boulders

SYMBOL	NAME	SIZE	QTY	DETAIL
⊗	Bleasted Granite Boulders available through Southwest Boulder phone#=(877)792-7825	4'	3	A/L3.10
⊗		3'	4	A/L3.10
⊗		2'	4	A/L3.10

PLANTING NOTES

- In all shrub and groundcover areas apply 2" layer of forest floor bark mulch per Aquinaga Fertilizer Company, Inc. Contractor shall submit sample to landscape architect for approval.
- Plant quantities are for REFERENCE ONLY. Contractor to provide and install all plant material shown on drawings.
- Furnish soil report through specifications once rough grading is completed.
- Turn and fill all planting areas per specifications



C:\Rent\Local Files\5018008-A13_central_ldshp.rvt