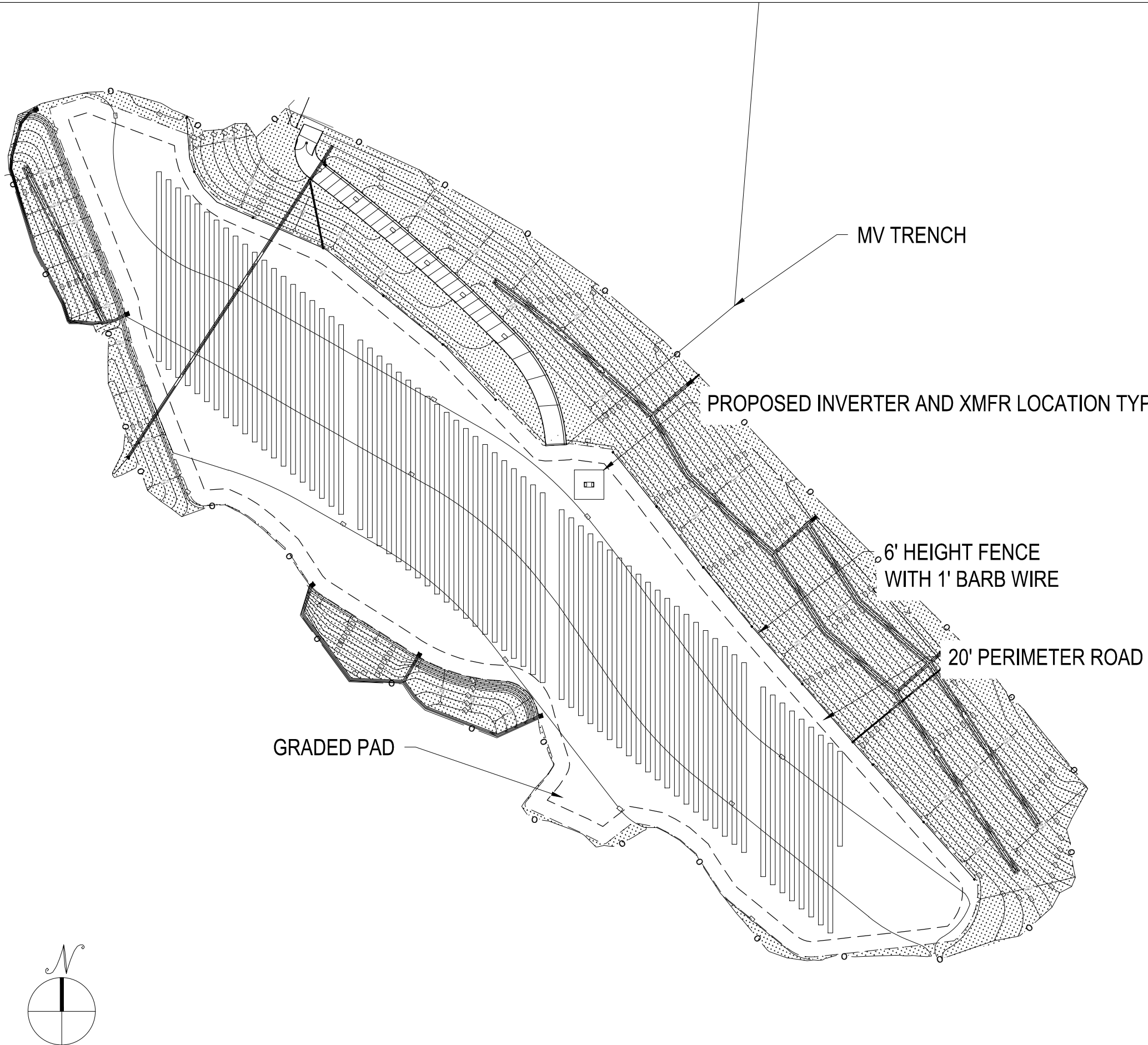
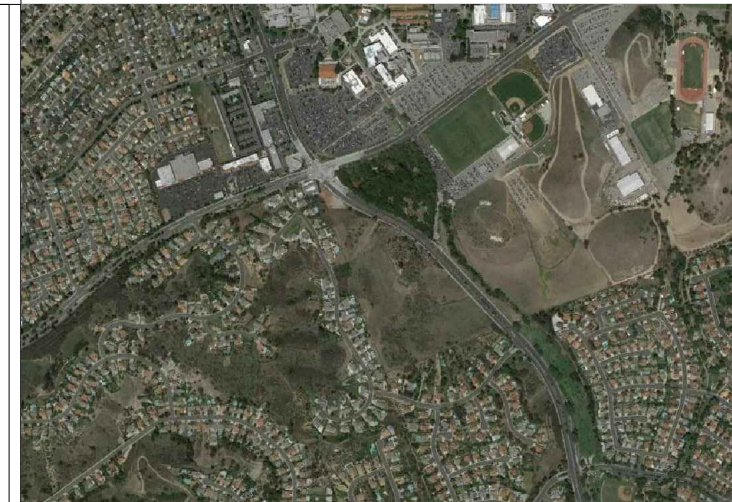


MT. SAN ANTONIO COLLEGE - SINGLE AXIS TRACKER - PV PROJECT



PROJECT INFORMATION



THIS DOCUMENT IS PROVIDED BY BORREGO SOLAR SYSTEMS INC. TO FACILITATE THE SALE AND INSTALLATION OF A SOLAR POWER SYSTEM FROM BORREGO SOLAR SYSTEMS. THIS IS A PRELIMINARY LAYOUT BASED ON AERIAL IMAGERY. THE ACTUAL PARAMETERS OF THE SYSTEM MAY VARY BASED ON A SITE SPECIFIC SURVEY AND THE COMPLETION OF DUE DILIGENCE EFFORTS. THESE DRAWINGS ARE NOT FOR CONSTRUCTION, REPRODUCTION, RELEASE OR UTILIZATION FOR ANY OTHER PURPOSE. WITHOUT PRIOR WRITTEN CONSENT IS STRICTLY PROHIBITED.



BORREGO SOLAR

5005 TEXAS STREET, SUITE 400
SAN DIEGO, CA 92108
PHONE: (888) 898-6273
FAX: (888) 843-6778
WWW.BORREGOSOLAR.COM

MT. SAN ANTONIO COLLEGE
1100 N GRAND AVE
WALNUT, CA 91789

PROPOSAL SPECIFICATION

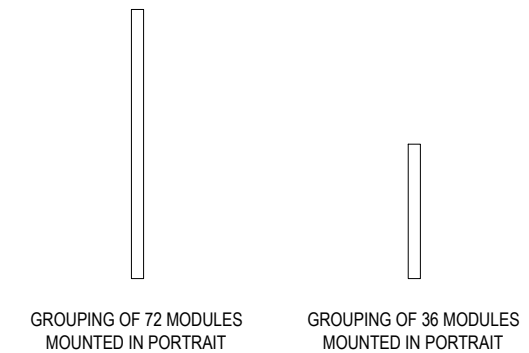
SYSTEM SIZE DC (kW)	1,972.800		
SYSTEM SIZE AC (kW)	1650		
DC TO AC RATIO	1.20		
MODULE INFORMATION	(4,932) LG400		
STRING INFORMATION	(274) PARALLELED STRINGS OF (18)		
INVERTER INFORMATION	(25) SG66KU-M		
TRANSFORMER INFORMATION	(1) 2000 KVA		
INTERCONNECTION VOLTAGE	12 kV		
RACKING DETAILS	SINGLE AXIS TRACKER		
GCR	50	SITE LATITUDE	34.02 N

ARRAY INFORMATION

ARRAY NO.	AZIMUTH	TILT ANGLE	NO. OF MODULES	NO. OF STRINGS	KW DC	INV - # CONNECTED
ARY-1	180°	0°	4,932	274	1,972.800	(25) SG66
TOTAL	-	-	4,932	274	1,972.800	-

PROJECT NUMBER:
P-SD-007307

LEGEND



REV	DATE	DRAWN	CHECKED	RELEASE LEVEL
1	04/13/17	TY	CT	PROPOSAL LAYOUT

SCALE: 0.000599
VALID ONLY WHEN PLOTTED
ANSI FULL BLEED B 11" X 17"

PV-1

L1 PROPOSAL LAYOUT