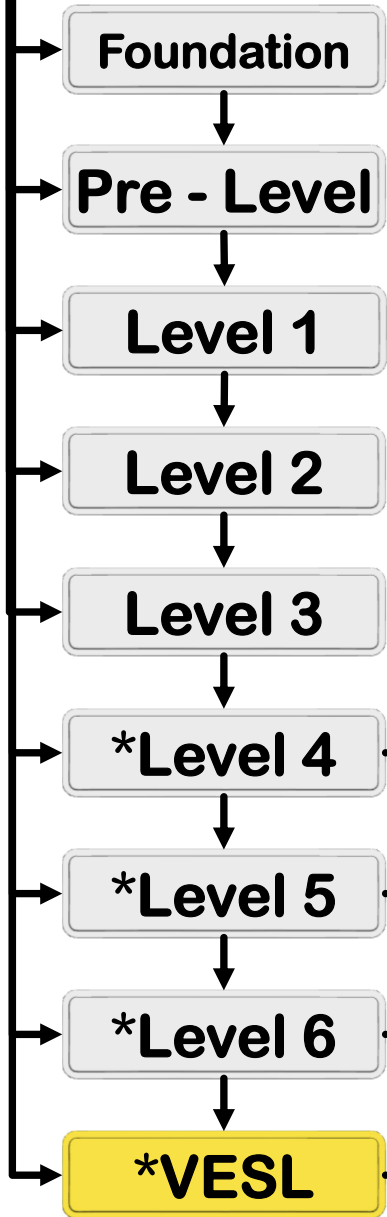


ESL Placement

English as a Second Language Department

ESL to Credit Courses Flowchart



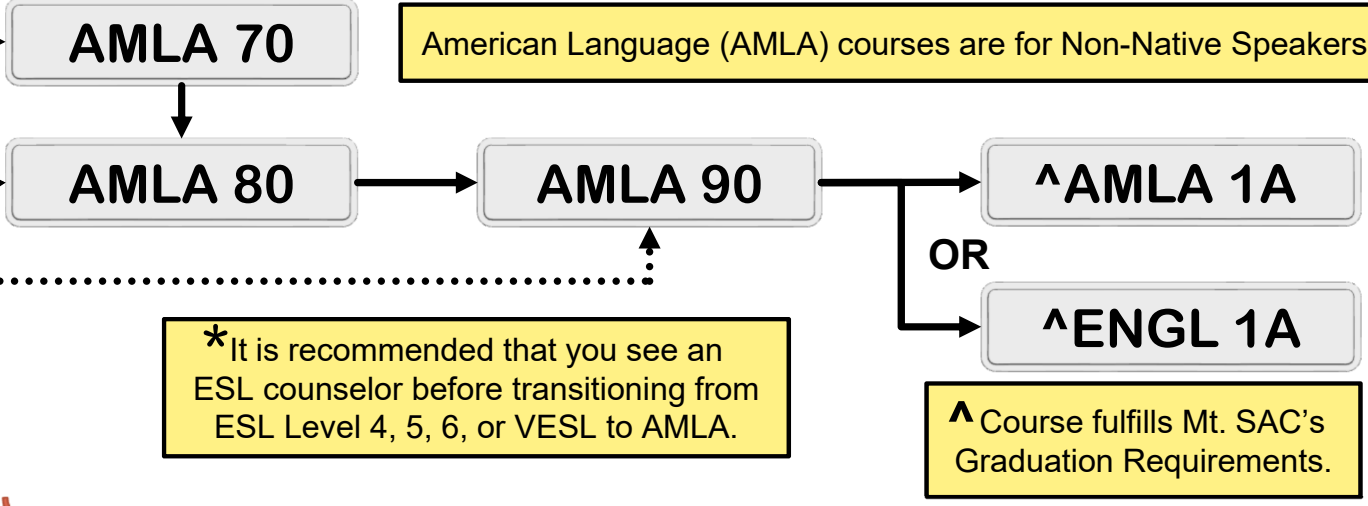
Based on the Assessment Questionnaire or the completion of your ESL level courses, the chart will indicate a starting point for taking Credit English courses

Students are encouraged to take the following AMLA reading and speaking courses along with the writing courses:

AMLA 70 AMLA 71 / 72
AMLA 80 AMLA 81 / 82 / 83
AMLA 90 ^AMLA 91 / 92 / 93

View the Schedule of Classes for other available AMLA courses

American Language (AMLA) courses are for Non-Native Speakers.



*It is recommended that you see an ESL counselor before transitioning from ESL Level 4, 5, 6, or VESL to AMLA.

^ Course fulfills Mt. SAC's Graduation Requirements.

Noncredit Courses

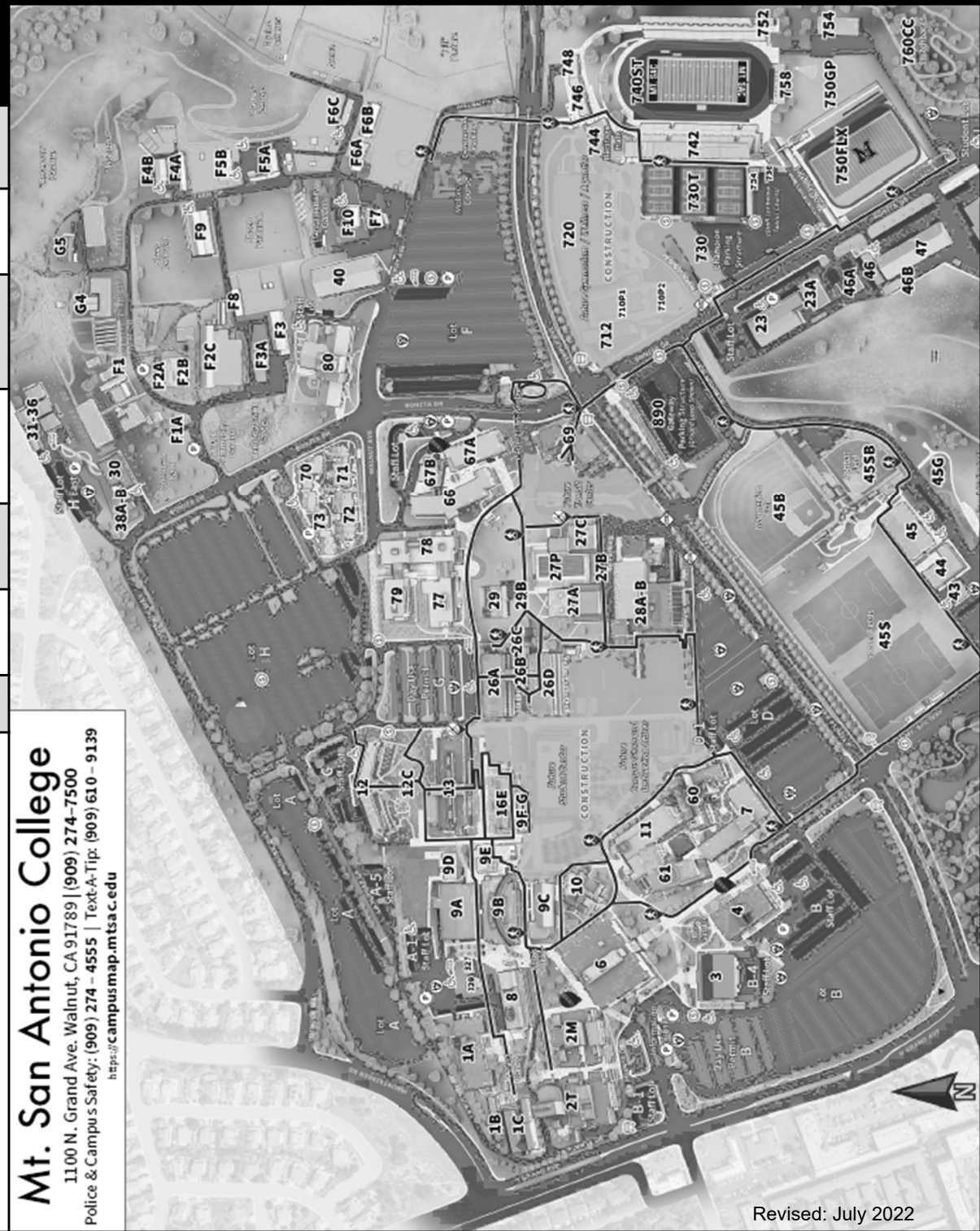
Credit Courses

Steps to apply to Mt. SAC

1. **Apply to Mt. SAC** - Go to www.mtsac.edu and complete the credit online application.
2. **Apply for Financial Aid** – Go to www.mtsac.edu and click on Financial Aid for additional information.
3. **Complete the Assessment Process** - Log onto your Mt. SAC Portal to complete the Assessment Questionnaire (AQ).
4. **Attend New Student Orientation** - Log onto to your Mt. SAC Portal and complete the “Online Orientation”.
5. **Get Counseling** - Go to www.mtsac.edu/counseling to schedule an appointment with a counselor.
6. **Register for Classes** - Log onto your Mt. SAC Portal check your registration date and register.
7. **Pay Fees** - Pay online through your Mt. SAC Portal.

Mt. San Antonio College

1100 N. Grand Ave. Walnut, CA 91789 | (909) 274-7500
Police & Campus Safety: (909) 274-4555 | Text-A-Tip: (909) 610-9139
<https://campusmap.mtsac.edu>



Revised: July 2022